

# LAPLINK

## WIRELESS

with AirShare™

AVAILABLE  
JANUARY 1994



### The Simplest Way to Link Your Portable and Desktop PCs.

**New LapLink Wireless** combines state-of-the-art AirShare wireless technology with intelligent communications software to provide the most convenient way to keep your portable and desktop PCs up-to-date. LapLink Wireless uses AirShare radio modules from National Semiconductor and LapLink Remote Access software from Traveling Software to connect your portable and desktop PCs without cables or wires. LapLink Remote Access gives you easy access to desktop files and printers right from your portable. And new Synchro Plus software keeps desktop and portable files synchronized and up-to-date automatically.

### The Invisible Link

AirShare's use of radio frequency technology means that two PCs don't have to be within "line of sight" to connect. AirShare modules can connect up to 30 feet apart, even through walls and between floors.

### Lightweight and Portable

Weighing just 3 ounces each, and about the size of a deck of cards, the AirShare modules are portable and convenient. Attach an AirShare radio module into the serial ports of your portable and your desktop PC for instant connectivity.

### Synchronize Files Automatically

Synchro Plus software in LapLink Wireless enables you to automatically copy new and updated files when it detects a connection, so your portable and desktop PCs are always in sync. You select which directories you want synchronized, and LapLink Wireless will do the rest. You can even synchronize "on-demand" – when you choose – with just a click of a button. The preview mode allows you to approve files before they are copied, so you can avoid unintended file overwrites. In addition, Synchro Plus allows you to resolve synchronize conflicts which occur when two files of the same name have both been updated. Best of all, LapLink Wireless runs in the background in Windows, so you can work on other important tasks while keeping both of your PCs current.

### Instant Linking to Desktop Resources

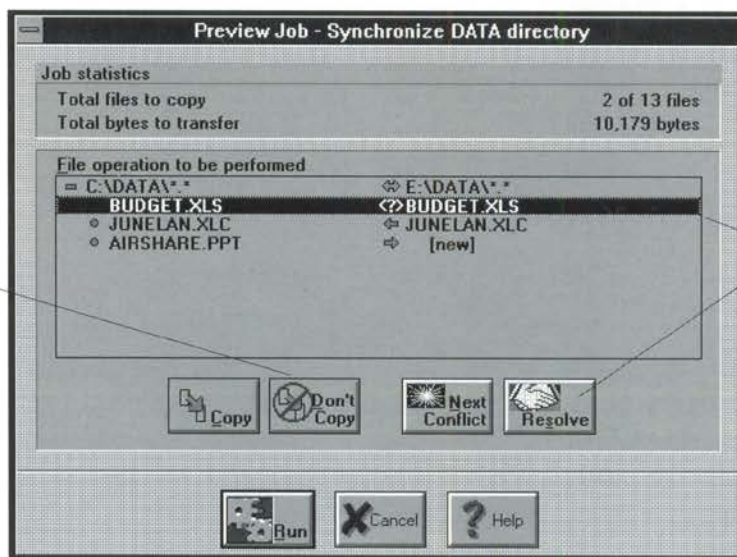
With LapLink Remote Access for Windows, you can print directly from your portable PC to a local or network printer. Once LapLink Wireless makes a connection between your portable and desktop PC, you can access the desktop's drives and printers just as if they resided on your portable. LapLink Remote Access runs in the background in Windows. And when you're on the road, use it to dial-up resources via modem, too.

### Complete Kit

LapLink Wireless comes with two AirShare units, three convenient power options, and software – nothing else to buy.



*Synchro Plus gives you complete control over which files will be synchronized.*



*Identifies files that have changed on both PCs since the last synchronization. You decide how you want to resolve conflicts.*

The preview mode lets you see which files will be synchronized, preventing accidental overwrites.

### AirShare Radio Module Specifications

**Range:** 30 feet in-office  
**Battery life:** 5 - 7 hours  
**Weight of AirShare module with battery pack:** 5 ounces  
**Dimensions with battery pack:** 2.28" x 4.88" x .71"  
**Connector:** 9-pin serial port  
**Transfer speed:** up to 115 Kbps  
**Channels:** three selectable channels  
 Non-licensed operation under FCC Part 15.249, 902-928 MHz (US only)

### Package Includes

- Two AirShare radio modules with 9-pin serial connectors
- One 9V battery pack, one pass-through PS/2 mouse port cable, and one AC adapter (batteries not included)
- 3.5" disks (5.25" available)
- User's Guide
- Velcro fasteners

### System Requirements

- MS/PC DOS 3.3 (DOS 5.0 and above recommended)
- MS Windows 3.1 on at least one of the PCs
- Intel or compatible 80286 (80386 and above recommended)
- 2MB memory (4MB recommended)
- 7K DOS memory (100K not using Windows Enhanced Mode)
- An available serial port on each PC
- Installation requires 2 MB disk space
- VGA or better recommended

### Options

- Hayes®-compatible modem
- Serial or parallel cable
- Additional AirShare modules available

**Suggested Retail Price \$299.95\***

\*U.S. Dollars. Available in the U.S. only

See your reseller or call Traveling Software at **800-343-8080** for more information (7:00 am to 5:00 pm Pacific time).

**Traveling Software, Inc.**  
 18702 North Creek Parkway  
 Bothell, Washington 98011  
**(206)483-8088**  
**(800)343-8080**

*The Leader  
 in Portable  
 Communications*





## DP87780/82/84 Sprite Wireless Link™

### GENERAL DESCRIPTION:

The DP87780/82/84 Sprite Wireless Link™ is a low cost, short range RF wireless communications data link for PC-to-PC connections. The Sprite Wireless Link is cost effective, easy to install and easy to operate. The wireless interface provides instant, cable-free laptop/notebook to desktop connectivity for file transfers between personal computers. It is available for parallel and serial port connections and also available in the PCMCIA 2.0 "PC Card" form factor.

### OPERATING SPECIFICATIONS:

Data rate: 0-125 Kbit/sec

Range: 10m

Power Requirements: 5V supply, 50 mA

### PRODUCT CONFIGURATIONS:

- DP87780: PCMCIA Type II Form Factor
- DP87782: Serial port interface with AC adapter
- DP87784: Parallel port interface with AC adapter

### PHYSICAL SPECIFICATIONS:

- PCMCIA Type II Form Factor
- External module: 80mm x 50mm x 30mm
- Antenna: integral

### FEATURES:

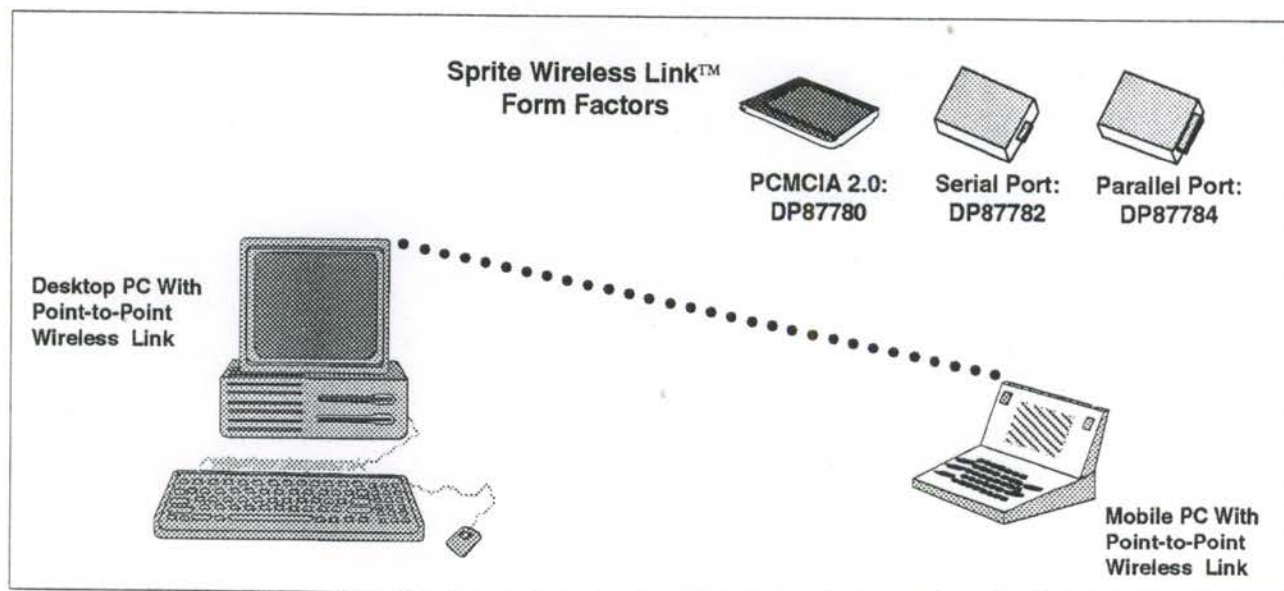
- Cost effective PC-to-PC data connectivity
- Easy user installation
- Easy operation
- Non licensed operation under FCC Part 15.249
- low power consumption
- PCMCIA 2.0 and serial/parallel port options
- Self-contained (No external RF module)
- Wide PC platform support

### APPLICATIONS:

- Remote desktop access
- Docking stations
- File transfers

### ENVIRONMENTAL:

- Operating:
  - Temperature: 0-50°C
  - Altitude: 2100m (max)
  - Relative Humidity: 10% to 95%
- Storage:
  - Storage temperature: -20 to 60°C
  - Relative Humidity: 10-98%
  - Altitude: 3050m (max)



# LAPLINK

Release 4

## PORTABLE LINKING SOLUTIONS

LapLink, the program that set the standard for file transfers between laptop and desktop PCs, now provides you with new levels of speed, ease, and functionality.

LapLink Pro represents the next generation of PC file transfer products. With easy-to-use pull-down menus, file transfer capabilities using a modem or over cable, and the fastest transfer speeds in the industry, LapLink Pro provides the laptop user the most powerful communications tool available.

What's more, LapLink Pro comes with everything you need to start transferring files, including both serial and parallel cables.

## FEATURES & BENEFITS OF LAPLINK PRO

- Transfer files between two PCs via parallel cable, serial cable or modem (over phone lines)
- Provides the fastest cable file transfers available – over 3 megabytes of data per minute
- Unique data compression technology shortens transfer time by as much as 80%
- Installs itself on remote computers, even over a modem
- Transfer multiple files or directories at once
- Display directory tree and files of both machines simultaneously
- Easy-to-use interface with pull-down menus
- Context-sensitive help for immediate assistance with any command
- View and edit text files with *LapLink Editor*
- *Batch* function automates repetitive file transfers
- Single-step *Synchronize* function makes files in two directories identical
- Use mouse or keyboard
- Operates with Microsoft Windows 3.x
- Includes Travelite™ serial and high-speed parallel cables for maximum portability

LapLink Pro. There's simply no faster, easier way to move files between PCs.





If you have any questions about LapLink Pro, please call us at (800) 343-8080, 7:00am to 5:00pm Pacific time.

**LAPLINK INCLUDES:**

- Both 3.5-inch and 5.25-inch disks
- Four-headed TraveLite serial cable
- High-speed parallel cable
- TraveLite cable carrying pouch
- Full documentation

**SYSTEM REQUIREMENTS:**

- IBM PC/XT/AT, PS/2 or 100% compatible
- DOS 2.11 or later
- 440K available RAM (512K recommended)

LapLink Pro is just **\$169.95**, suggested retail price.

**HERE'S WHAT PEOPLE ARE SAYING ABOUT LAPLINK PRO:**

**BYTE, September 1991**

"Traveling Software rewrote LapLink 'from the ground up' ... and the results - LapLink Pro 4.0 - are impressive."

- Fred Langa

**PC COMPUTING, June 1991**

"Drop-down menus and mouse support make it much easier to select files for transfer ... the improvements were worth the wait."

- David DeJean

**TRAVELING SOFTWARE, INC.**  
18702 North Creek Parkway, Bothell, WA 98011  
(206) 483-8088 • (800) 343-8080



## LAPLINK PRO: Full-Featured Support for Simpler Needs

by Angela Gunn

The convenience of running applications via a modem is often obliterated by the misery of using a slow or even a middling-speed modem. And in many cases, all users need to do is transfer files and perhaps perform simple disk management. If either of these descriptions fit your situation, Traveling Software has a package for you.

*LapLink Pro*, a descendant of the grand old laptop-to-PC school of *LapLink* packages, incorporates modem capabilities into its powerful file-transfer and management package. You will not be able to run applications; but if you were not planning to run them anyway, this product is just your ticket. *LapLink Pro*, Version 4.0's \$169.95 price buys you a capable, richly featured file-transfer package with built-in relief from the headaches usually associated with communications utilities.

*LapLink Pro* falls into a gray zone among file-transfer, remote-control, and communications software. From its roots in file transferring, *LapLink Pro* retains a brightly colored set of serial and parallel cables that enables laptop-to-desktop transfer. From communications software, *LapLink Pro* draws its modem-to-modem transfer ability. And it shows its kinship with the products in our main review by making file-transfer and management procedures as simple as they would be on the local machine. Best of all, its Universal Communications Object (UCO) communications engine ensures that you do not need to know much about file-transfer, remote-control, or communications software to run it.

File management is all *LapLink Pro* knows, but it knows file management. You get the split screen familiar to previous *LapLink* users, with a consistent interface throughout the program's use. You also get batch-transfer, updating, and tagging abilities. The Synchronize option updates files to the most recent version, whether the file is on the host or the guest. And the program allows connection into a net-

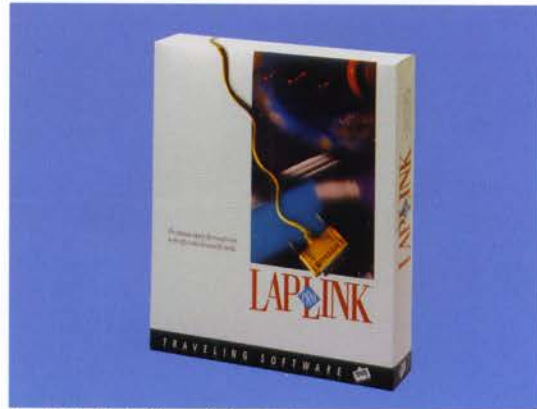
work: If the remote computer is attached to the network, so are you. Traveling Software wisely built in password-controlled access, though the company would have been still wiser to ensure that the password does not show on the screen. A curious passerby has no trouble going into the program and changing the access password.

File-transfer speeds are limited only by the speed of the modems, and *LapLink* has a proprietary data-compression protocol that keeps things moving along quickly. During transfer, a status gauge keeps you apprised of what percentage of the file has been transferred. In the case of multiple file transfers, the numeric percentage shows the transfer status of the individual file, while the gauge indicates the aggregate of the selected transferring files.

Simple file management—deleting, renaming, and creating directories and files—is also available. As with many of the programs in the main roundup, shelling out to DOS or other applications on the local machine is possible, but the program will hang up the modem. (It's nice to note that the disconnection process for *LapLink Pro* is fairly clear-cut; while several products in the main review gave false hang-ups or "no carrier" messages, we did not encounter this particular problem with *LapLink Pro*.) Of course, the host machine's applications and its peripherals remain unavailable to the guest, but even this is mitigated somewhat by *LapLink Editor*, a built-in text editor with such thoughtful extras as a large-type option for laptop users.

The Windows-style pull-down menus can be opened by keystroke or by mouse; since there is no need to control the remote mouse, the speed is just as it would be normally on the

local machine. While the program is DOS-based, it also comes with a Windows icon and setup for easy access. Installation is simple; UCO negotiates stop bits and parity for both the local and remote machine, thus ensuring that using modems to transfer files is no



*LapLink Pro* is intended only for file transfer and a little housekeeping of your hard disk, but its pull-down menus and powerful utilities make those tasks simple and speedy.

more complicated than using the parallel or serial cables of yore.

If your needs are beyond the range of this product—if you require control of the remote machine's applications, rather than just its files—by all means go for the full modem remote-control packages reviewed in the main article. But if your tasks or your equipment are a bit less sophisticated, *LapLink Pro*'s simple fast transfers and updates will make you happy. Its many thoughtfully chosen features make *LapLink Pro* useful for remote computing duties. And *LapLink Pro* provides the bonus of use as a traditional laptop-to-PC file-transfer package—that is, if you ever bother to bring your laptop into the office again. ■

### **LapLink Pro, Version 4.0**

Traveling Software Inc., 18702 North Creek Pkwy., Bothell, WA 98011; 800-343-8080, 206-483-8088.

**List Price:** \$169.95 (includes parallel and serial cables).

**Requires:** 440K RAM, DOS 2.11 or later, Hayes-compatible modem.

**TRAVELING SOFTWARE**

*The Leader in Portable Communications*

18702 North Creek Pkwy • Bothell, WA 98011

206/483-8088 or 800-343-8080

